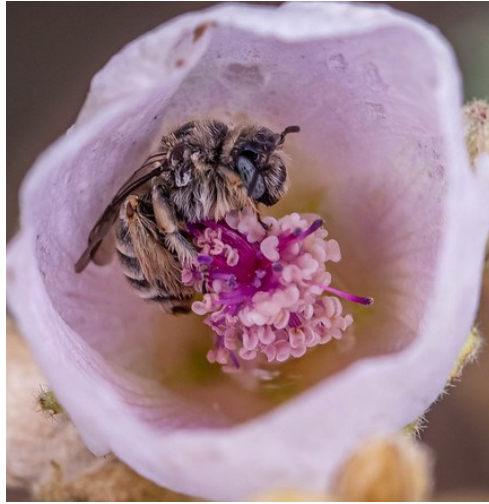
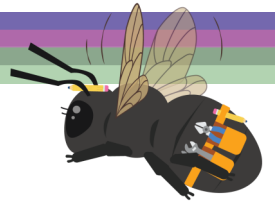


Build a Globe Mallow Bee!



You can make a native desert bee. Here's how!

You need:

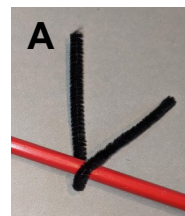
1. Five 6-inch pipe cleaners:
 - ◆ 2 white
 - ◆ 2 black
 - ◆ 1 tan
2. a pencil
3. google eyes
4. glue



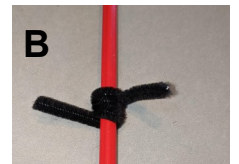
Steps to Make a Globe Mallow Bee

1. Make the head.

A. Fold one black pipe cleaner in half over a pencil.



B. Wrap it around the pencil, leaving ~1/2 inch sticking out on each side.



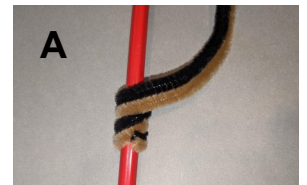
C. Slide off the pencil.

D. Gently fold down the ends to make antennae.



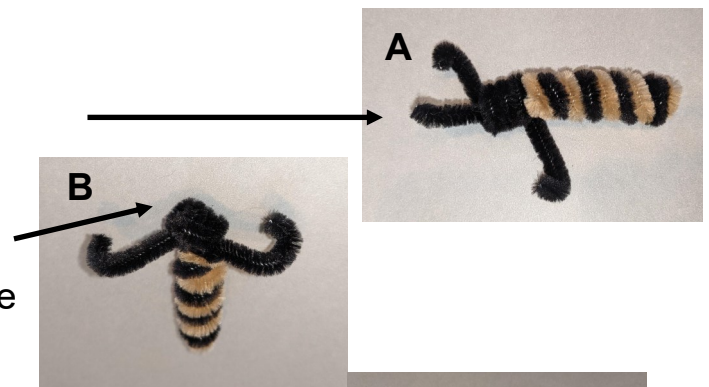
2. Make the body.

- Line up the remaining black and tan pipe cleaners next to each other.
- Wrap them around the pencil in a coil side by side to make stripes.
- Slide off the pencil.
- Gently straighten out ~1/2 inch end of the black pipe cleaner (this will attach the head.)
- Gently squeeze the opposite end tighter (to make the bee's rear end.)



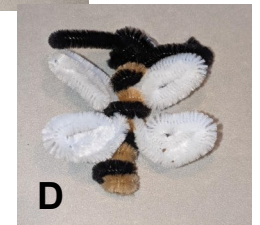
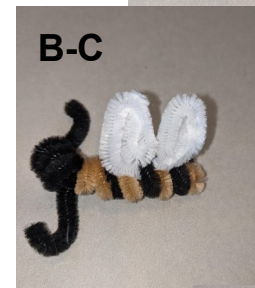
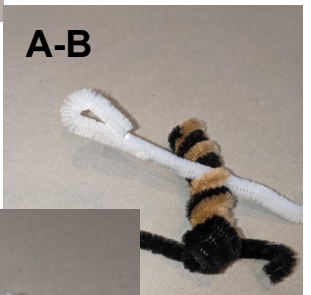
3. Attach the head.

- Stick the black end of pipe cleaner through the hole on the head.
- Fold it over the head to attach it.
- Gently squeeze everything together to make it look "bee like."



4. Make wings.

- Gently slide one white pipe cleaner through a side coil on the bee body until it is centered on the coil.
- Fold one end of the white pipe cleaner down in thirds (a little shorter than you did for the antennae and head attachment) till it reaches the middle.
- Repeat on the other end. This forms one set of wings.
- Repeat steps A-D on the other side to make the other set of wings.



5. Attach eyes.

- Glue google eyes onto the face.
- Your bee is done!

