

# BEE HEROES

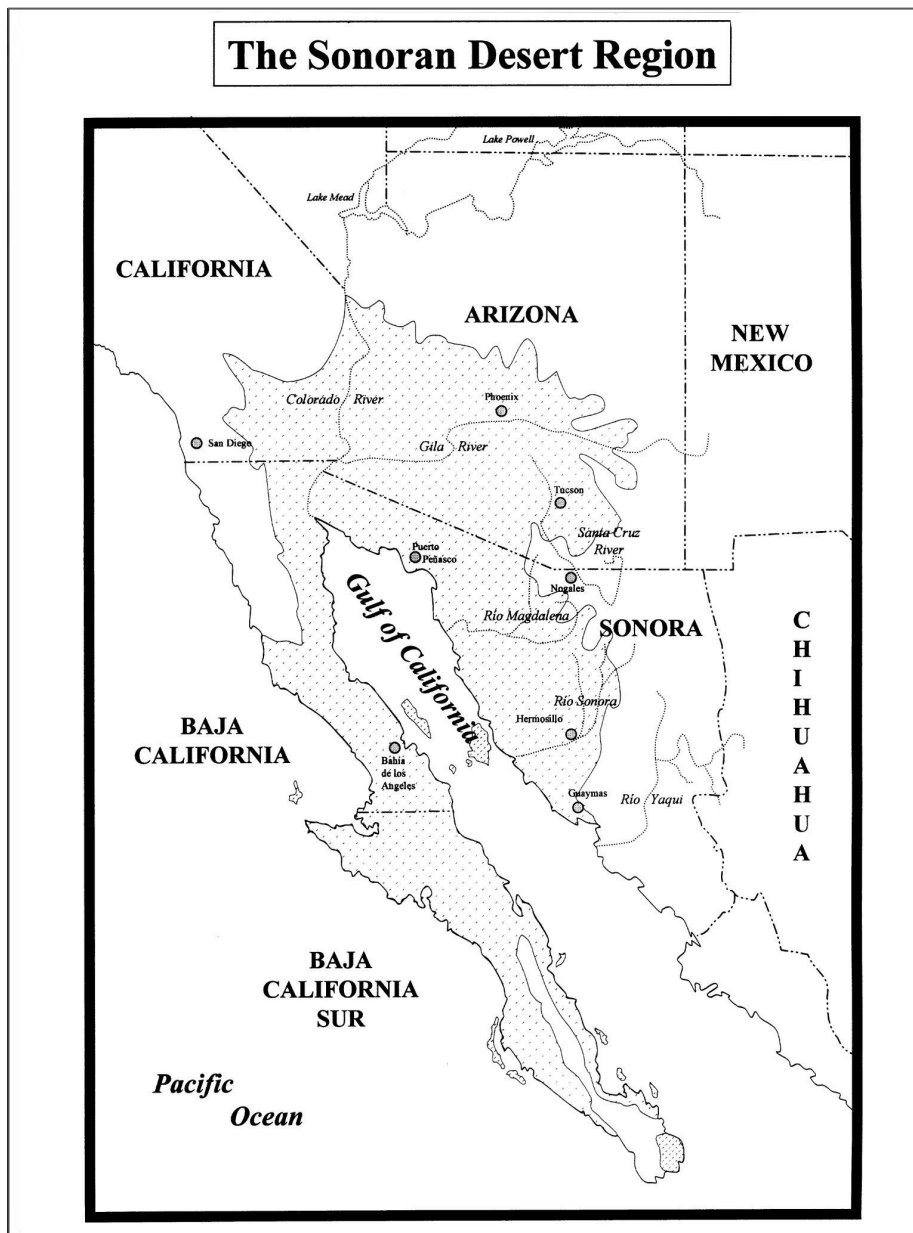
## Journal

By Entomologist:

Draw a picture of a bee and all it needs to survive.



Color in the map to show the Sonoran Desert.



Circle where you live!

Probe

1

While watching the bee video, record what you notice and wonder.

Notices  
and  
Wonders

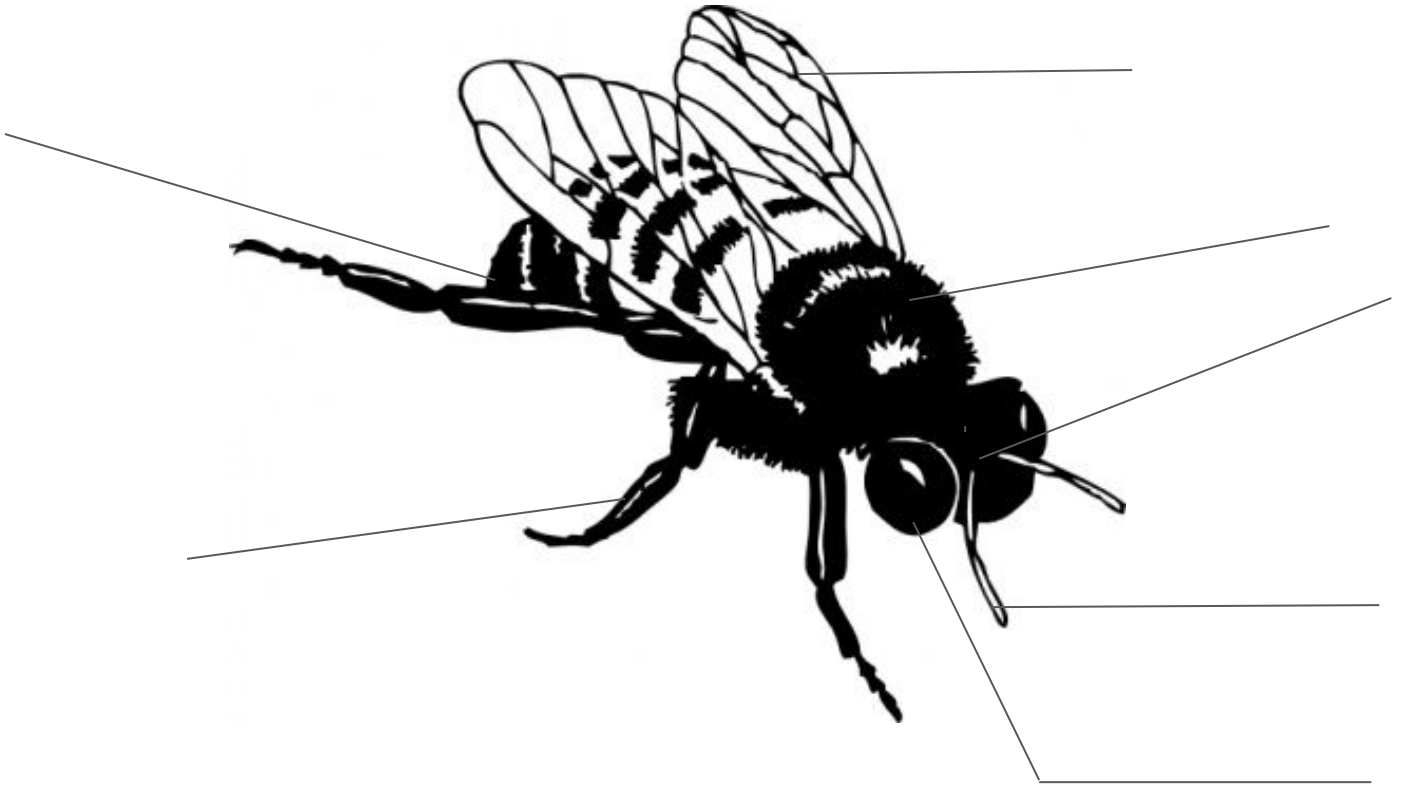


Review: Do you know the parts of a bee? Use this word bank!

head  
wing

thorax  
antennae  
eye

abdomen  
leg



List what a BEE needs to survive.

1. \_\_\_\_\_
2. \_\_\_\_\_
3. \_\_\_\_\_
4. \_\_\_\_\_

After matching and discussing different bees, list possible food sources and shelters for bees.

# Food Sources

Carpenter:

Leafcutter:

Cactus:

Globe Mallow:

# Shelters

Carpenter:

Leafcutter:

Cactus:

Globe Mallow:

Use the words on the right to fill in the reading passage.

The Sonoran Desert has a very \_\_\_\_\_ population of bees. There are about 750 kinds of \_\_\_\_\_ bees here. All \_\_\_\_\_ use their amazing bodies to collect \_\_\_\_\_ and \_\_\_\_\_ for their \_\_\_\_\_. They all need this \_\_\_\_\_ to live and grow. Some even have strong \_\_\_\_\_ to make a suitable \_\_\_\_\_ in wood.

**nectar**

**pollen**

**energy**

**brood**

**nest**

**diverse**

**mandibles**

**bees**

**native**

Explain

5

Write where the bee lives/nests and what the bee eats after hearing the story and revisiting certain pages. Discuss and then answer the questions at the bottom.

<p>Globe Mallow</p> <p>- _____</p> <p>- _____</p>	<p>Carpenter</p> <p>- _____</p> <p>- _____</p>
<p>Cactus</p> <p>- _____</p> <p>- _____</p>	<p>Leafcutter</p> <p>- _____</p> <p>- _____</p>
<p>Fairy</p> <p>- _____</p> <p>- _____</p>	<p>Sweat</p> <p>- _____</p> <p>- _____</p>

What do bees need to survive?

---

---

Why do we need bees to survive?

---

---

How can humans help bees survive?

1. \_\_\_\_\_
2. \_\_\_\_\_
3. \_\_\_\_\_
4. \_\_\_\_\_
5. \_\_\_\_\_

You will be making a poster of why people should help bees and how!



Make a poster with how to save bees and why we should.

A large, empty rounded rectangular box with a thin black border, intended for a student to draw a poster about saving bees. The box occupies most of the page below the instruction.

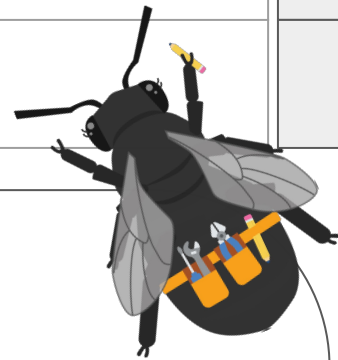
Elaborate

8

# Make a model of a Bee House!

## Follow these criteria and constraints!

Criteria	Constraints
-identify bee type(s) that will use house	Time:
-label materials in model drawing	Size of House:
-include map where the bee house will be placed, where bees will find water and food, and how temperature will be controlled in all weather. (map)	Materials:
-label nearby water and food sources (map)	



>>Be ready to explain what kind of bee this house is best for!

Evaluate

9